



THz Tera-P90+

Nature is the foundation of life and well-being

What is health/ The significance of geomagnetism/
The phenomenon of 'magnetic hunger' is prevalent
in modern society

What is pulsed electromagnetic field?

Concept of PEMF / Principles of PEMF /
Unique Advantages of PEMF / Diverse
Applications of PEMF

Introduction of THz Tera-P90+

High-Frequency PEMF / Bio-magnetic Energy /
Six Major Patented Technologies / Facial Beauty
Device / Head Massager

A horizontal strip on the left side of the slide shows a stylized Earth with purple and red magnetic field lines curving around it.

Contents

A large dark green circle labeled "Contents" is the central element. A blue curved line with three circular nodes, each containing a white triangle icon, connects the three content sections to the central circle.



Part.1

**Nature is the foundation of
life and well-being**

What is health?

Health is maintained through the harmonious coordination of the body's internal and external environments.



Internal Environment

The internal environment refers to the various indicators of the body, acting as a medium for the exchange of substances between cells and the external environment. Modifying the internal environment is crucial for controlling current symptoms.



External Environment

The human body's external environment relies on nature to provide essential life elements, exchanged through the internal environment with every cell. When disruptions occur in the internal environment, it essentially points to issues in the supply from the external environment

Optimizing the external environment is essential for sustainable health management

In the past we coexisted harmoniously with nature

The innate, natural energy radiating from the Earth serves as the ultimate remedy for humans to combat inflammation and mitigate the aging process.



Adequate sunlight exposure

Nestled by mountains and water

**Commence work at sunrise,
conclude at sunset**

Scenic beauty of the countryside

Fresh air

Fertile soil

Good water quality



Now

The fast-paced lifestyle disrupts the balance between humans and nature



Pollution

Concrete building

The issue of suboptimal health is growing

"Inflammation, free radicals, fatigue, chronic diseases, and aging follow one after another."

Skyscrapers stand tall

Processed food and fast-food culture

Construction

Burning midnight oil and working overtime disrupts regular sleep patterns

We are almost disconnected from nature

Life, meant to have a natural connection with the Earth



//
Magnetism stands as the most potent and fundamental force in the universe. Nothing in the world would exist without it, including human //

—— 《Understanding Magnetism》

Sunlight, Air, Water, Magnetic field

It is one of the four fundamental elements crucial for human existence

Life on Earth emerged with the formation and increase of the geomagnetic field to a certain strength

Scientists studying paleomagnetic data have uncovered the pattern of complete geomagnetic reversals, revealing a surprising synchronization with the evolution of Earth's biological world. The formation and strengthening of the geomagnetic field appear essential for the emergence and protection of life. Organisms sensitive to geomagnetic changes, such as dinosaurs, experienced declines in reproductive function and population coinciding with prolonged geomagnetic reversal events. This highlights the crucial role of a stable geomagnetic field for the health and continuity of life on Earth.



Absence or deficiency of geomagnetism would pose a life-threatening crisis

Everyone is familiar with the story of astronaut Gagarin, who, upon returning from space, exhibited various symptoms like dizziness, headaches, and fatigue. These were later attributed to 'magnetic deficiency syndrome' caused by being away from Earth's magnetic field in space. Although symptoms may not be immediately apparent, the impact of geomagnetic deficiency on human health persists, as highlighted by Gagarin's extreme case.



The NASA rodent magnetic control experiment

"In a rodent experiment conducted by NASA, rodents placed in a magnetic-shielded environment exhibited reduced activity, signs of premature aging, and adverse health effects, including fur loss and early mortality. The findings suggest that prolonged exposure to weakened magnetic fields can induce physiological and biochemical changes, impacting cell and tissue growth, organ function, reproductive capacity, and leading to premature death."



Unveiling the secrets of longevity in Bama: The harmony of magnetic fields and the path to a long and healthy life

The world recognizes five 'longevity villages': Bama in Guangxi, China; Hotan in Xinjiang, China; the Caucasus region in Armenia; Hunza in Pakistan; and Vilcabamba in Ecuador. All of these regions exhibit geomagnetic field strengths surpassing those of other areas worldwide.

The intensified magnetic field enhances kinetic energy in cellular ion movement, increasing permeability and accelerating cellular metabolism. This suggests a potential link between higher magnetic field intensity and extended lifespan in Bama residents. Maintaining a 'magnetic balance' is believed to promote metabolism and boost immunity. Studies show that Bama's undisturbed native geomagnetic field, the most favorable in the country, plays a crucial role in the health and longevity of its residents."

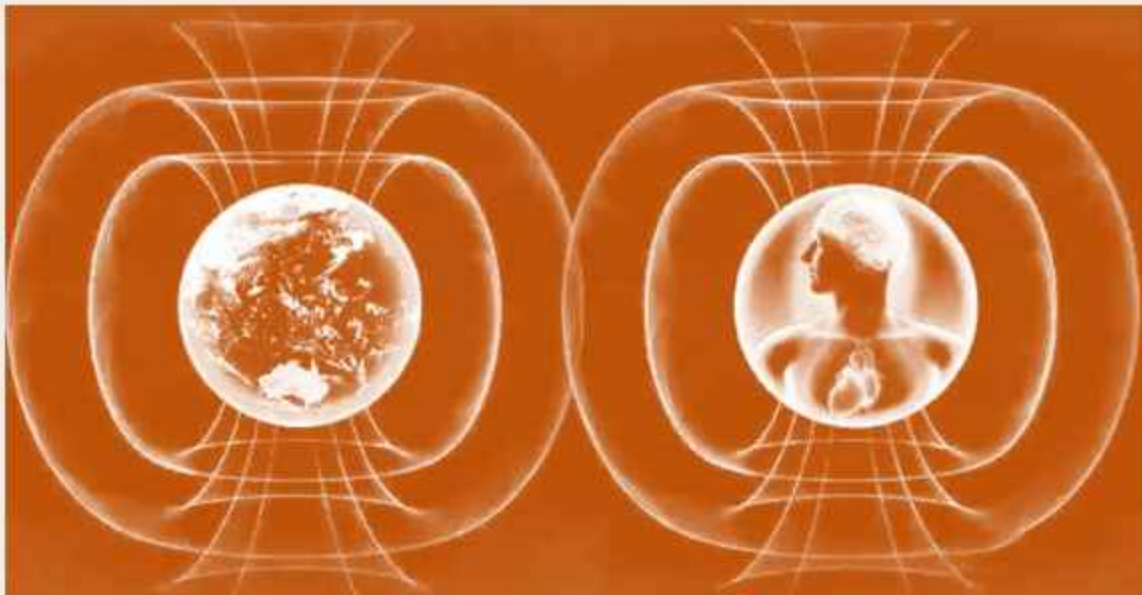
The modern lifestyle of people is largely disconnected from the Earth's geomagnetic field

- Modern lifestyles are predominantly spent in structures made of concrete and steel, materials that can absorb and shield magnetic forces. Statistical data indicates a reduction of at least 40-50% in magnetic field strength in places like high-rise apartments, elevators, and cars.
- Urban environments with constant traffic and extensive power lines disrupt the natural geomagnetic setting.
- Transportation of tap water through iron pipes weakens and absorbs the magnetic field, eliminating its natural magnetism.
- Limited outdoor activities in nature result in reduced exposure to natural geomagnetic fields.
- Widespread consumption of artificial or synthetic foods in modern society leads to mineral deficiencies and reduced magnetic substances within the body.



Clearly, we are experiencing a prolonged state of 'magnetic deprivation'

While a hungry stomach audibly signals, 'magnetic deprivation' is silent, invisible, and goes unnoticed in the short term. Prolonged deprivation of magnetic forces, compounded by exposure to harmful external substances, results in a deteriorating human health condition. Addressing suboptimal health is a pressing need!



Hence, with the gradual weakening of Earth's magnetic field, employing magnetic therapy to compensate for this reduction is essential. This approach aims to mitigate the environmental interference with the human body's magnetic field, carrying significant implications for human well-being.

Clinical data indicates that prolonged magnetic deficiency in the human body can lead to various health issues

**Magnetic deprivation
in the cells**

Reduced cellular vitality

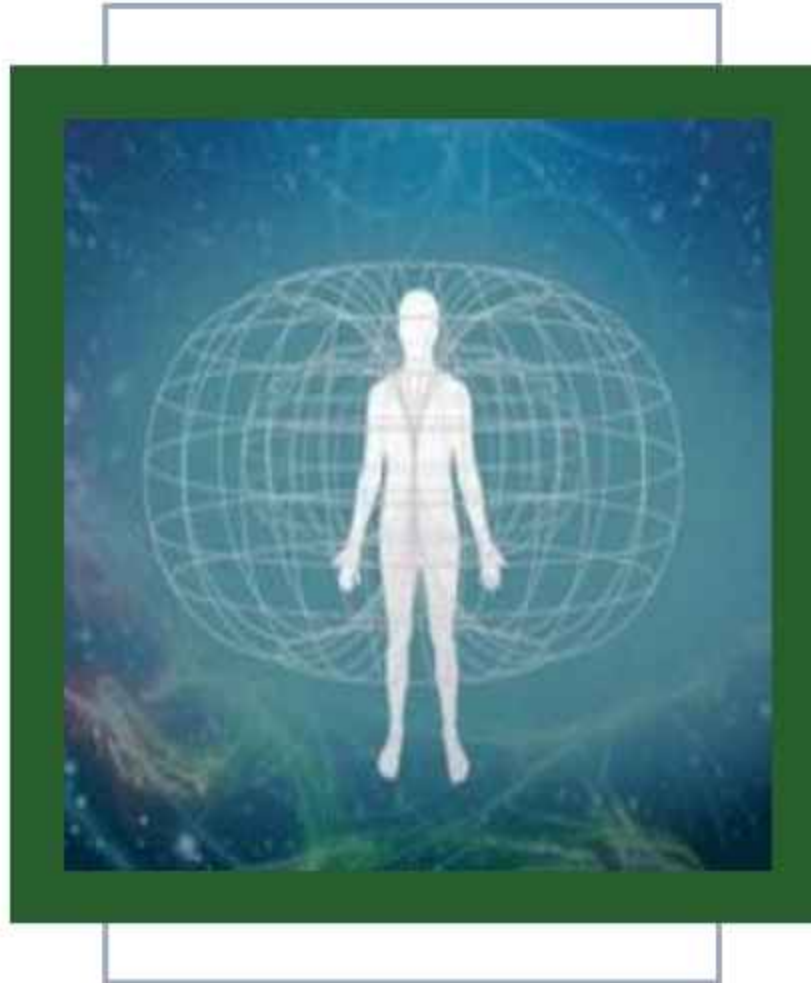
**Magnetic deprivation
in the blood**

Increasing blood viscosity, leading to poor blood circulation

**Magnetic deprivation
in the body**

Inducing neural imbalances, disrupting metabolism, and accelerating cellular apoptosis





Part.2

What is PEMF?

An abstract graphic in the top left corner consisting of a complex, blue, wireframe-like structure that resembles a human head or a neural network, with lines extending outwards.

What is PEMF?



PEMF, or Pulsed Electro-Magnetic Field, technology emulates the Earth's natural magnetic field for biophysical therapy. It leverages the energy of pulsed electromagnetic fields to modulate cellular metabolism and enhance overall body circulation. Widely used in medical domains like orthopedics, rehabilitation, neurology, cardiovascular, and dermatology, PEMF technology is not only adopted by health-conscious individuals for well-being but is also embraced by elite athletes and Olympians to boost endurance and expedite physical recovery.

NASA has initiated the era of biophysical therapy with PEMF

When NASA sent astronauts for extended stays in space, they observed significant physical damage due to the absence of Earth's magnetic field. Recognizing the importance of the Earth's electromagnetic field for human health, NASA initiated in-depth research into Pulsed Electromagnetic Field (PEMF) therapy. NASA reports show that astronauts living on the International Space Station for over six months experience muscle and microcirculation atrophy. However, this condition can be adjusted and repaired upon returning to NASA using a bioelectromagnetic chamber. PEMF therapy, modeled after Earth's electromagnetic pulses, enhances the circulatory system and metabolism, repairing damaged microcirculation, nerve endings, and muscle tissues, helping astronauts readjust to a 'grounded state' post their space journey.



航天技术

美国国家宇航局 (NASA) 研究发现, PEMF 可以降低骨质丢失与肌萎缩。

A decorative blue abstract graphic consisting of thin, overlapping lines and dots, resembling a network or signal, located in the top left corner.

The widespread use of PEMF technology

Pulsed Electromagnetic Field (PEMF) = the body's charger



Suitable for a
diverse range
of individuals



Simple,
convenient,
and effective



Safe and
non-invasive



Improving
suboptimal
health
symptoms



**THz Tera-
P90+**

Part.3

**Introduction of
THz Tera-P90+**



The closer to nature, the healthier.
The healthier, the more beautiful.



THz Tera-P90+ The World's First PEMF Integrated Technology

- Enhanced cellular activity
- Accelerated cellular metabolism
- Delayed cellular aging

Core technology

PEMF Integrated Technology



Recognizing the vital link between cellular health and overall well-being, OlyLife introduces the groundbreaking PEMF INTEGRATED technology. This innovation combines PEMF with **EMS, red light, and low-frequency pulse technologies**, creating a synergistic effect. The result is the **restoration of the body's magnetic levels** to their natural state, leading to enhanced cellular activity, accelerated metabolism, and delayed cellular aging. This holistic approach effectively addresses a range of suboptimal health issues at their root cause

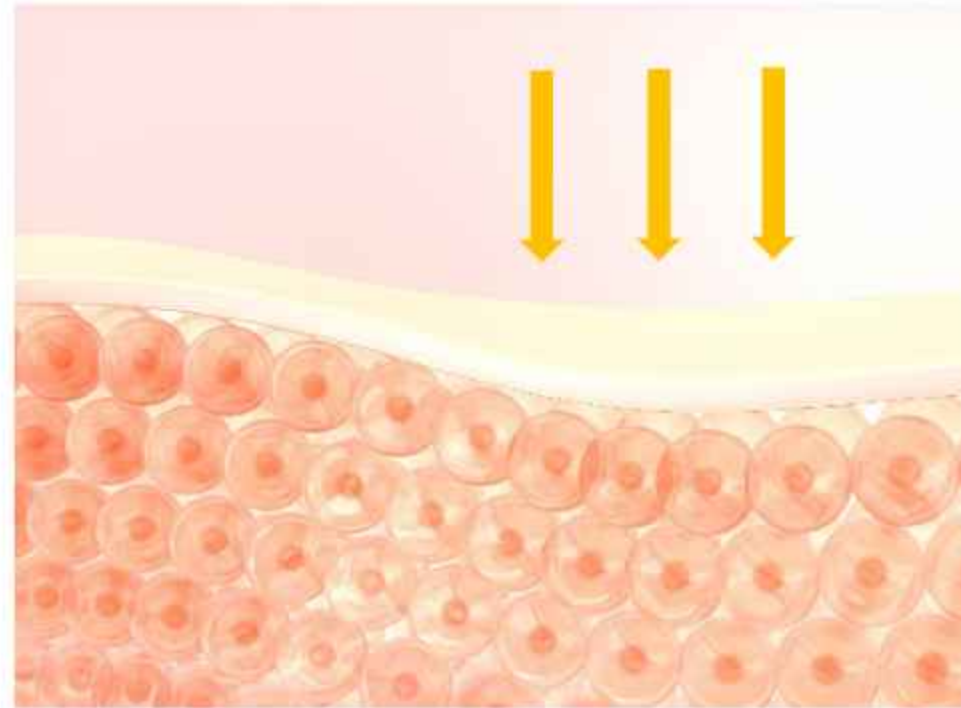
The principle of THz Tera-P90+



Electromagnetic Field Effect

The THz Tera-P90+ emits a 1MHz high-frequency pulse current, creating an internal heating effect when applied to human tissues. This generates a Pulse Electromagnetic Field (PEMF) that penetrates skin and tissues, reaching organs and cells. The resulting ion movement and vibration within cells positively influence cellular metabolism, ion channel activity, and intracellular signal transduction.

This electromagnetic field promotes beneficial effects on cell activity, proliferation, and tissue repair and regeneration.



The principle of THz Tera-P90+

Thermotherapy Effect

The THz Tera-P90+ emits bio-resonance energy waves, evenly transferring them into the body through a transmission energy board from the feet. This process induces rapid heating of water molecules with positive and negative ions in tissues, creating a magnetic hyperthermia effect (MHT) that enhances deep thermal circulation in the body.

This generated heat has physiological benefits, including vasodilation, improved blood circulation, accelerated metabolism, and heightened cellular activity. As a result, it promotes muscle relaxation, pain relief, inflammation reduction, and supports tissue repair.



The principle of THz Tera-P90+

Biomagnetic Energy Effect

Living biological cells inherently possess pulsating electromagnetic energy. PEMF's external magnetic field interacts with the body's bio-magnetic field, impacting cellular electrical activity, metabolism, signal transmission, and microcirculation. This forms the fundamental basis for utilizing PEMF in medical applications, including treatment, rehabilitation, and pain management.



Empowered by Terahertz, the energy is amplified

The THz Tera-P90+ simultaneously releases terahertz light waves with wavelengths ranging from 3 to 3000 micrometers. These waves penetrate up to 3-5 centimeters deep into the skin, resonating in harmony with human cells. This resonance activates cellular energy and enhances blood circulation.

Dual Assurance Scientific Design

Exceptional safety assurance



- **Balanced energy release, eliminating concerns about the risk of burns**

The New Oxygen Meter departs from conventional single-point local delivery methods by utilizing specialized IC management for energy release. Employing an energy wave balance and heat conduction mode, it effectively mitigates potential discomfort arising from localized high heat.

- **The installation of a safety fuse ensures secure electrical operation**

The T5A 250V fuse device automatically disconnects when the current exceeds the limit, safeguarding the instrument and ensuring user safety



Upgraded foot pedal design Suitable for both Asian and Western populations

**Dimensions of the single-sided pedal:
31.31 x 14.1 centimeters**

The pedal is designed to accommodate all users, suitable for individuals up to size 47. Made from 304 stainless steel, it features high density and a brushed finish, providing a comfortable touch and effective energy transfer.

Refined design that aligns with your preferences



- **20 Strength:** A wide range of strength for adjustment, allowing personalized settings to meet diverse requirements
- **Infrared remote control:** Wireless is more convenient, allowing targeted and interference-free control of other devices
- **Multi-functional:** One device for shared use among multiple individuals.

Frost Age Beauty Device

Tighten
the skin

Lifting
and
contours

Enhance
skin
elasticity



Improve
wrinkles

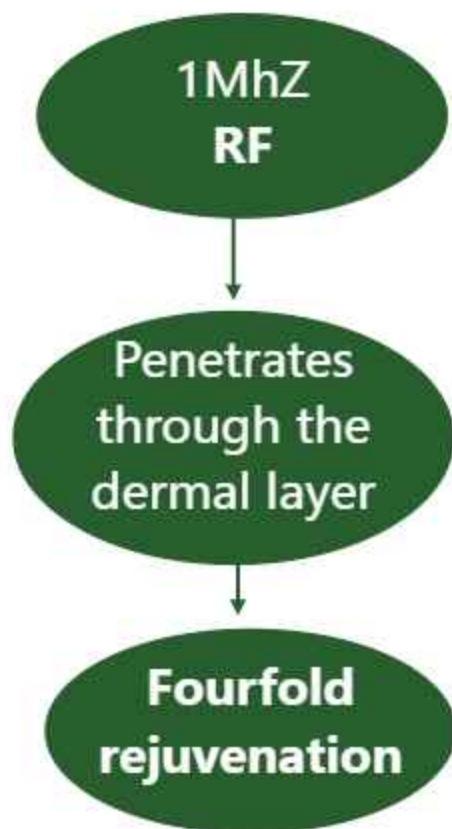
Stimulate
collagen
production

Improve
scars and
pigmentation

The World's First PEMF Integrated Technology



RF radiofrequency technology



Warm up the skin tissues

RF beauty devices generate high-frequency electric currents that penetrate the skin surface, producing heat to stimulate collagen and elastin production. This promotes tighter and more elastic skin.

Stimulates the reformation of collagen

In the presence of high temperatures, radiofrequency stimulates the regeneration of collagen in the dermal layer, promoting its reorganization. This enhances skin firmness, reduce wrinkles and sagging.

Activate cellular metabolism

Radiofrequency promotes the metabolism of skin cells, increases cellular vitality, and leaves the skin smoother and healthier.

Stimulates collagen proliferation

Radiofrequency, by gently heating the skin, stimulates the production of collagen in the dermal layer, providing ample collagen for a lasting youthful appearance.

Electrical Muscle Stimulation (EMS) Effectively lifts and tightens the skin

Empowered by PEMF INTEGRATED technology, EMS microcurrent effectively exercises and stimulates facial muscles. Utilizing a gel medium, it induces rapid skin contraction, accelerating skin renewal and metabolism. This enhances skin elasticity, promotes collagen and elastin production, and addresses sagging and drooping issues.



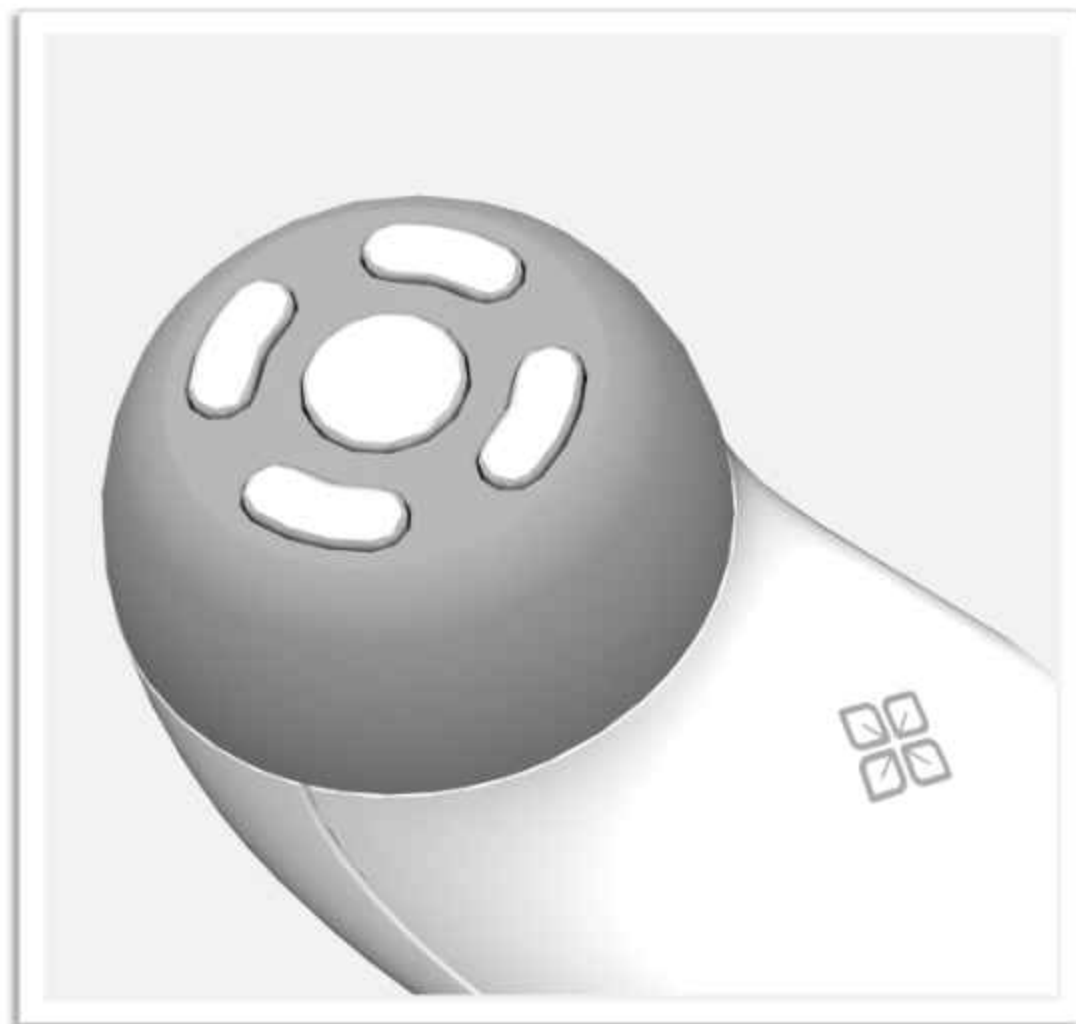
2 types of gels, ideal for both beauty enhancement and promoting circulation

Facial: Tightening, anti-wrinkle, and soothing gel

1. Featuring eight types of hyaluronic acid for instant hydration, leaving the skin more moisturized and elastic.
2. Enriched with type III collagen, hydrolyzed collagen, and anti-aging ingredients like polypeptides, exhibiting excellent synergistic anti-aging effects.
3. Infused with multiple plant-based components, providing anti-allergic and soothing effects, addressing aging signs caused by inflammation.
4. Immediate lifting and tightening action, improving skin elasticity, and reducing fine lines.
5. Enhanced effectiveness when used with Frost Age Beauty Device, offering excellent lubrication and conductivity. Simultaneously releases multiple anti-aging nutrients, penetrating deeper for superior anti-aging results.

Shoulder, Neck, and Lumbar: a soothing, relieve, and lubricating gel

1. Enhances circulation, promotes blood circulation, and relieves tension in the muscles and joints.
2. Alleviates muscle pain, disperses blockages, and promotes blood circulation.
3. Improves discomfort in the shoulder and neck area, addressing stiffness and soreness.
4. Clears lymphatic congestion in the shoulder and neck, aiding detoxification, dispelling dampness, and alleviating cold conditions. When used with Revitaluxe massager, it enhances the effects of heat and blood circulation, providing relief for shoulder fatigue, discomfort, and conditions like frozen shoulder, quickly alleviating stiffness and pain.



Thoughtful design for comprehensive care, offering delicate pampering for the entire face

Ergonomic Handle Design: Conforming seamlessly to the hand's curvature, ensuring a comfortable grip for effortless skincare.

Precision Applicator Head: With a 3.88-centimeter diameter, it precisely conforms to facial contours, optimizing energy transfer for effective results.

Three-level Intensity Adjustment: Offers multi-dimensional lifting and tightening, preventing sagging and wrinkles.

Versatile Use: Suitable for the face, shoulders, neck, and waist.

Revitaluxe Massager

Soothes
muscles

Promotes
blood
circulation

Immersive
massage

Relieves
fatigue

Alleviates
headaches

Improves
scalp
health



The World's First
PEMF Integrated Technology



3-in-1 magnetic fusion

3-in-1, maximizing the benefits of
magnetotherapy

**Pulsed electromagnetic, static magnetic,
and rotating magnetic promoting blood
circulation**

The 7.8Hz low-frequency PEMF produces a pulsed electromagnetic field, synergizing effectively with static and rotational magnetic features in the handle to form three high-energy magnetic fields. This combination reaches various tissue depths, regulates the body's biomagnetic field, induces microcurrents, stimulates key acupoints, clears meridians, and provides relief for headaches, offering a soothing effect on brain nerves.



6000 Rotating Magnetic Massage per minute An unparalleled relaxation experience

Combining 3000Gs magnetic energy with mechanical force, it generates a magnetic massage at **6000 rotations per minute**, stimulating muscles in areas such as the head, shoulders, neck, and limbs. This promotes blood circulation, alleviating muscle fatigue and stiffness. Additionally, it stimulates nerve endings, facilitating the regulation and recovery of the nervous system, thereby relieving pain and discomfort.



Dual pulse transmission

EMS & TENS dual-pulse microcurrent massage

Eliminate fatigue, alleviate pain

EMS (Electrical Muscle Stimulation): The microcurrents from EMS stimulate the scalp's microcirculation, increasing blood flow to enhance oxygen and nutrient supply. This aids in improving scalp health and effectively soothes and relaxes tense areas.

TENS (Transcutaneous Electrical Nerve Stimulator):

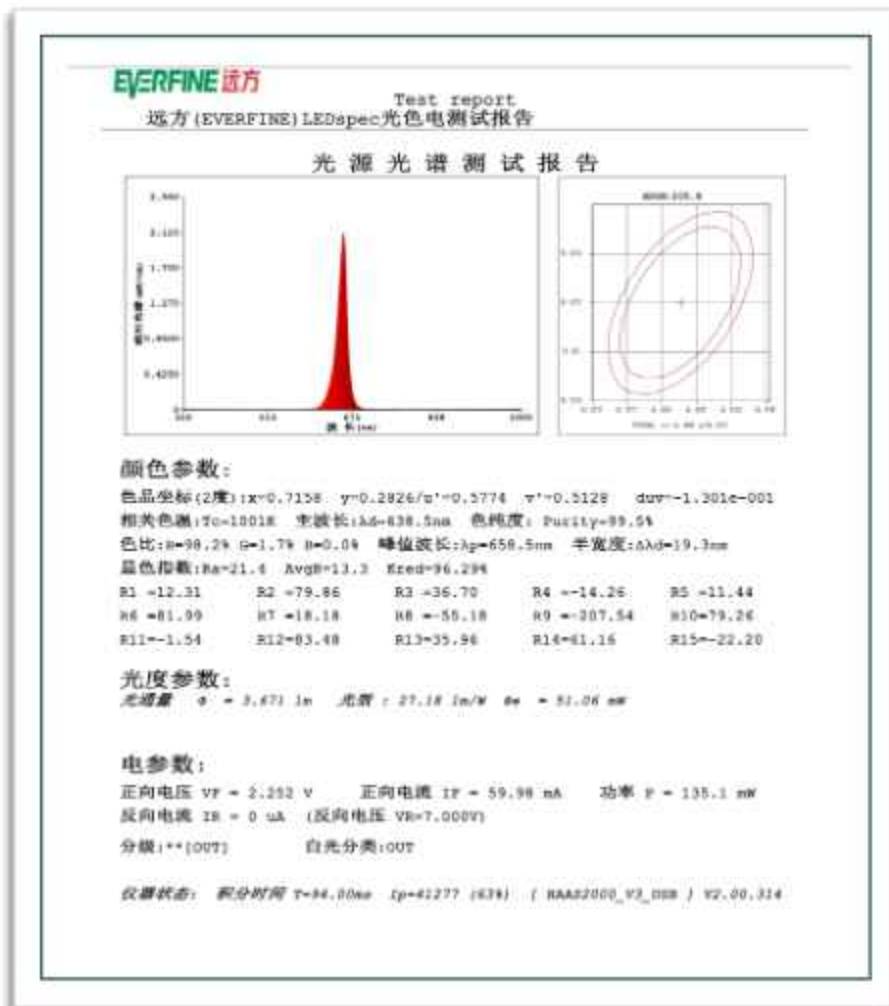
By stimulating nerves with electric currents, it interferes with the transmission of pain signals, thereby reducing the sensation of pain. This can effectively alleviate headaches and improve sleep issues.



Red light

650nm red light energy Relieves inflammation, promoting scalp health

The 650-nanometer wavelength red light, known as the 'golden range' for human well-being, is extensively applied in various health fields due to its non-invasive and highly penetrative properties. Red light stimulates cell regeneration, aiding in inflammation relief and healing. It also enhances scalp blood flow and stimulates follicle metabolism, awakening dormant follicles to an active and healthy state.





42°C warm vibrational massage

Indulge in a warm and soothing experience, promoting complete relaxation for both the body and mind

42°C is the optimal temperature for human thermal therapy, avoiding the risk of skin burns at high temperatures while ensuring a comfortable sensation for the body. The warmth can penetrate deep into the muscles, stimulating subcutaneous blood vessels, increasing blood and heat circulation. This effectively alleviates discomfort such as soreness, stiffness, fatigue, and pain, providing users with the best massage experience.



Experience daily vitality and healthy choice for your family